



Royal Temple Yacht Club

Ramsgate Euro Regatta 2019 Notice of Race



31st May 2019

The organising authority for each day of racing will be The Royal Temple Yacht Club

Notice of Race 2019 for IRC and Cruiser classes.

Version 1.0

1. RULES

- 1.1 The regatta will be governed by the 'rules' as defined in the Racing Rules of Sailing.
- 1.2 IRC Classes shall comply with IRC rules Parts A, B and C, but excluding IRC rules 21.1.5(d) and (e) and rule 22.4 and also comply with ISAF Offshore Special Regulations covering minimum equipment and accommodation Standards Category 4 including Part C plus a means of propulsion other than the boat's sails and VHF Radio.
- 1.3 Cruiser Classes shall comply with Royal Temple Yacht Club minimum safety equipment rules, attached as Appendix to Notice of Race.

2. ADVERTISING

- 2.1 Rights to use names and likenesses
Competitors automatically grant to the Organising Authority, without payment, the right in perpetuity to make, use and show any motion pictures, still pictures and live taped or filmed television of or relating to the event.
- 2.2 Sponsor's Logos
If competitors are issued with material by the Organising Authority bearing a sponsor's logo or advertising they shall display such material as instructed.

3. ELIGIBILITY AND ENTRY

- 3.1 The Regatta is open to all boats over 18 ft in length divided into the following handicap classes:-
 - 3.1.1 Boats with a current IRC Certificate
Provisional Rating Bands:-
 - Class 1 1.000 & above
 - Class 2 0.999 & below
 - 3.1.2 Cruiser class with or without spinnakers.
 - Class 3 Cruiser Class
- 3.2 Eligible boats may enter by completing the official entry form available from either the address shown on the last page of the Notice of Race, or from the event website www.rtyc.com and entry fees can be paid by credit or debit card directly with the RTYC Sailing office. Competitors entering via the on line form on the event web site will also be required to sign an entry form at the registration office.
- 3.3 **Entry Fees will be as follows:-**

31 st May	£ 10.00 / €15.00
----------------------	------------------

4. SCHEDULE

- 4.1 Registration will take place RTYC Sailing Office. All boats must register prior to competing in their first race.
The RTYC Sailing Office will open from 09.00 Friday 31st May for registration.
- 4.2 Racing is scheduled as follows: -
 - 4.2.1 For IRC classes
The IRC Euro Regatta Series will consist of one qualifying race on Friday 31st May for the Michel Jonette Trophy.
 - 4.2.2 The Cruiser Classes will consist of one race on Friday 31st May
- 4.3 The scheduled time for the first warning signal on Friday 31st May is 13.25 hours.

5. MEASUREMENT

- 5.1 The Race Committee may inspect any boat or her equipment, sails and rating certificate before, during or after the races.
- 5.2 One design classes shall comply with their own class rules, except for crew/weight limitations.
- 5.3 All boats shall carry an operational VHF marine radio equipped with Channels 14, 16, 72 and 77.
- 5.4 No rating changes will be accepted following registration, except as a result of a rating protest or to correct rating office errors.
- 5.5 Class identification flags must be flown on the backstay of each boat whilst racing.

6. SAILING INSTRUCTIONS

Sailing Instructions will be available on the official web site www.rtyc.com and in hard copy at registration.

7. COURSES

Each race will start the RTYC Club starting line and will be sailed around buoys in the English Channel waters.

8. SCORING

- 8.1 The low points scoring system of Appendix A of the Racing Rules of Sailing will apply.
- 8.2 All Times will be corrected to the nearest second to determine finishing place.

9. BERTHING

- 9.1 It is intended that all competitor's yachts will berth on pontoons in the all-tide marina adjacent to the Harbour Western Arm as directed by the Dockmaster. If the Berthing Master is not present, please call on VHF Channel 80. Harbour Dues are the responsibility of each boat owner.

10. RADIO COMMUNICATION

- 10.1 Except in an emergency a boat shall neither make radio communication while racing nor receive radio communications not available to all boats. This restriction also applies to mobile telephones.
- 10.2 The following VHF channels will be used by the regatta:-

Port Control	Channel 14
Dock Office	Channel 80
Temple Race Hut	Channel 72 (Club Start Line)

11. PRIZES AND TROPHIES

- 11.1 Class Prizes will be awarded for all races.
- 11.2 Prize Giving will take place as follows:-
31st May at 18.30hrs at RTYC

12. Risk and Responsibility Statement

- 12.1 Rule 4 of the Racing Rules of Sailing states "The responsibility for a boat's decision to participate in a race or to continue racing is hers alone."
- 12.2 Royal Temple Yacht Club accept no responsibility or liability for loss of life or injury to skipper or crew or others, or for the loss of, or damage to, any vessel or property.
- 12.3 The skipper and crew shall be held jointly responsible for the conduct of the boat's crew before, during and after a race. Misconduct may result in both the person in charge and crew being excluded from future races and renders a boat liable to disqualification.
- 12.4 The race committee shall make starting signals unless in their opinion it is manifestly unsafe for any of the boats entered to remain in the vicinity of the starting line. Each boat shall exercise her responsibility under Fundamental Rule 4 Decision to Race and decide whether or not to start or to continue to race.

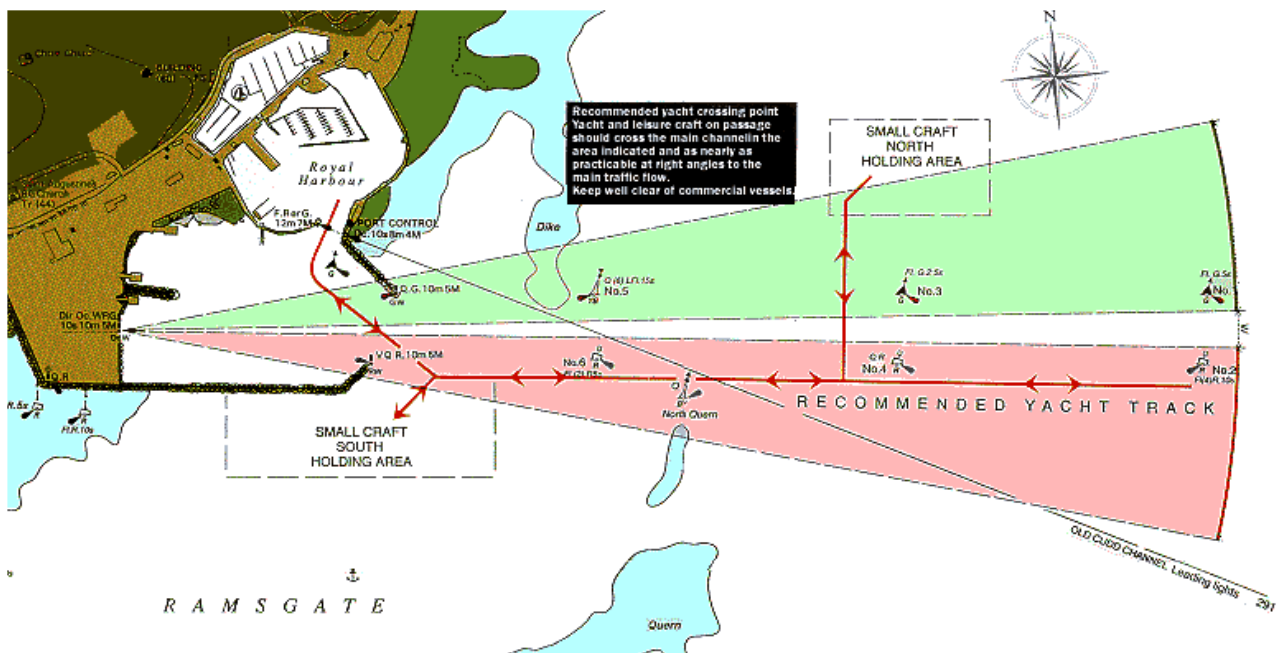
- 12.5 No boat shall be accepted as an entry unless the skipper of the boat has, before the start of the race, signed a declaration in the terms set out in the entry form.
- 12.6 Sailing is by its nature an unpredictable sport and therefore inherently involves an element of risk. By taking part in the event, each competitor agrees and acknowledges that:
 - 12.6.1 They are aware of the inherent element of risk involved in the sport and accept responsibility for the exposure of themselves, their crew and their boat to such inherent risk whilst taking part in the event;
 - 12.6.2 They are responsible for the safety of themselves, their crew, their boat and their property whether afloat or ashore;
 - 12.6.3 They accept responsibility for any injury, damage or loss to the extent caused by their own actions or omissions;
 - 12.6.4 Their boat is in good order, equipped to sail in the event and they are fit to participate
 - 12.6.5 The provision of a race management team, patrol boats and other officials and volunteers by the event organiser does not relieve them of their own responsibilities;
 - 12.6.6 The provision of patrol boat cover is limited to such assistance, particularly in extreme weather, as can be practically provided in the circumstances;
 - 12.6.7 Vessels setting to sea for offshore and coastal races are responsible for ensuring that their boat is equipped and seaworthy so as to be able to face extremes of weather; that there is a crew sufficient in number, experience and fitness to withstand such weather; and that safety equipment is properly maintained, stowed and in date and is familiar to the crew;
- 12.7 The fact that the race committee conducts inspections of a boat does not reduce the responsibilities of each competitor set out in this Notice of Race.

13. INSURANCE

Each participating boat shall be insured with sufficient insurance cover to meet all or any claims.

14. SUPPLEMENTARY INFORMATION

- 14.1 Admiralty Charts – 1828, 1607 or 1183 (South Thames Estuary or Thames Estuary). 1827 may also be useful (Approaches to Ramsgate), but it is not essential. Laminated Check Charts may be included in the race pack issued at registration. A waypoint list will be available in the race pack and displayed on the clubs website prior to the first race.
- 14.2 The approach to Ramsgate for commercial traffic is from the east via a well-marked deep-water channel. This is used by large ferries all small craft are advised to keep well clear of such vessels and to proceed via the recommended yacht track to the South of the buoyed channel when approaching or leaving Ramsgate. All yachts should maintain a listening watch on VHF Channel 14. A small craft holding area is in operation to the north of No. 3 buoy and to the south of the southern breakwater. Outer Harbour – Yachts must motor directly through the turning circle area when entering and leaving the Harbour.
- 14.3 The gate to the inner marina is open for approximately two hours either side of high water. By day a red and yellow flag and by night a single green light is displayed above the Dock Office to indicate that the dock gate is open.



15. BARS AND CATERING

RTYC welcomes you with a stunning Bar and Terrace overlooking the Marina.

16. FURTHER INFORMATION

For further information contact:
 Matt Green , Rear Commodore Sail
 Royal Temple Yacht Club
 6 Westcliff Mansions
 Ramsgate
 Kent
 CT11 9HY
 Tel: +44 (0)1843 591766
 Fax: +44 (0)1843 583211
 E-mail: info@rtyc.com
 Website: www.rtyc.com

Class racing for the following classes:

