



Royal Temple Yacht Club

Euro Regatta 2019
IRC & Cruiser Classes

SAILING INSTRUCTIONS

Version 1.0

31st May 2019

1. RULES

- 1.1 The regatta will be governed by the rules as defined in The Racing Rules of Sailing.
- 1.2 In the event of a conflict between these Sailing Instructions and the Notice of Race, these Sailing Instructions will prevail. This changes rule 63.7.

1.3 SHIPPING AND PORT REGULATIONS

- 1.3.1 Any boat infringing the International Regulations for Preventing Collisions at Sea or by-laws in respect of commercial shipping may be protested by the Race Committee for infringement of this requirement.
- 1.3.2 An engine shall be used when appropriate to avoid risk of collision with another vessel that is under way but not racing; or in grave emergency. The facts shall be reported to the RC at the finish, with written details to the race office before the protest time limit.
- 1.3.3 Ramsgate By-laws copy at <http://www.portoframsgate.co.uk/about-us/byelaws/>

2. NOTICES TO COMPETITORS

- 2.1 Notices to competitors will be posted on the official notice board located inside RTYC.

3. CHANGES TO SAILING INSTRUCTIONS

- 3.1 Any change to the Sailing Instructions will be posted before 0830 on the day it will take effect, except that any change to the schedule of races will be posted by 2000 hours on the day before it will take effect.
- 3.2 Verbal amendments to the Sailing Instructions may be advised by the Race Committee on VHF Channel 72.

4. SIGNALS MADE ASHORE

- 4.1 Signals made ashore will be displayed on the flagpole at RTYC Race Hut
- 4.2 Flag L over a numeral pennant means that more than one notice to competitors has been posted and the numeral pennant signifies the number of the last notice posted. This is additional to Flag L in Race Signals.
- 4.3 When flag AP is displayed ashore, "1 minute" is replaced with "not less than 60 minutes" in the race signal AP. This is additional to the meaning of flag AP in the Race Signals.
- 4.4 When flag Y is displayed ashore Rule 40 applies at all times while afloat. This changes the Part 4 preamble.

5. BRIEFING AND SCHEDULE OF RACES

- 5.1 There will be a competitors briefing at 10.30 hrs on Friday 31st May for the IRC and Cruiser classes at the RTYC
- 5.2 Races are scheduled as follows:-

| <u>Date</u> | <u>Class</u> | <u>Warning Signal</u> | <u>Races</u> |
|--------------------------------|--------------|-----------------------|--|
| Friday 31 st May | 1,2&3 | 1325 | Race 1 Euro Regatta Series Michel Jonette Trophy |

- 5.3 It is intended to allocate classes as below, although the Race Committee may, at its discretion, alter these according to the number of entries.

| <u>Class</u> | <u>TCC</u> | <u>Class Flag</u> |
|--------------|-----------------|-------------------|
| IRC 1 | 1.000 and above | Numeral Pennant 1 |
| IRC 2 | 0.999 and below | Numeral Pennant 2 |
| CC 3 | Cruiser Class | Numeral Pennant 3 |

- 5.4 Boats are required to display their Class Flag (with a hoist of not less than 9 inches) on their backstay.
- 5.5 The race committee may amalgamate classes or vary the order of starting for subsequent races depending on when classes complete their previous race. Full details of any changes will be provided on VHF Channel 72.

6. RACING AREAS

The racing area will be between East Margate and South Foreland on Friday 31st May.

7. THE COURSES

- 7.1 The marks to be rounded and the sequence of rounding will be broadcasted on VHF Channel 72 not later than 10 minutes before the first warning signals displayed.

8. MARKS

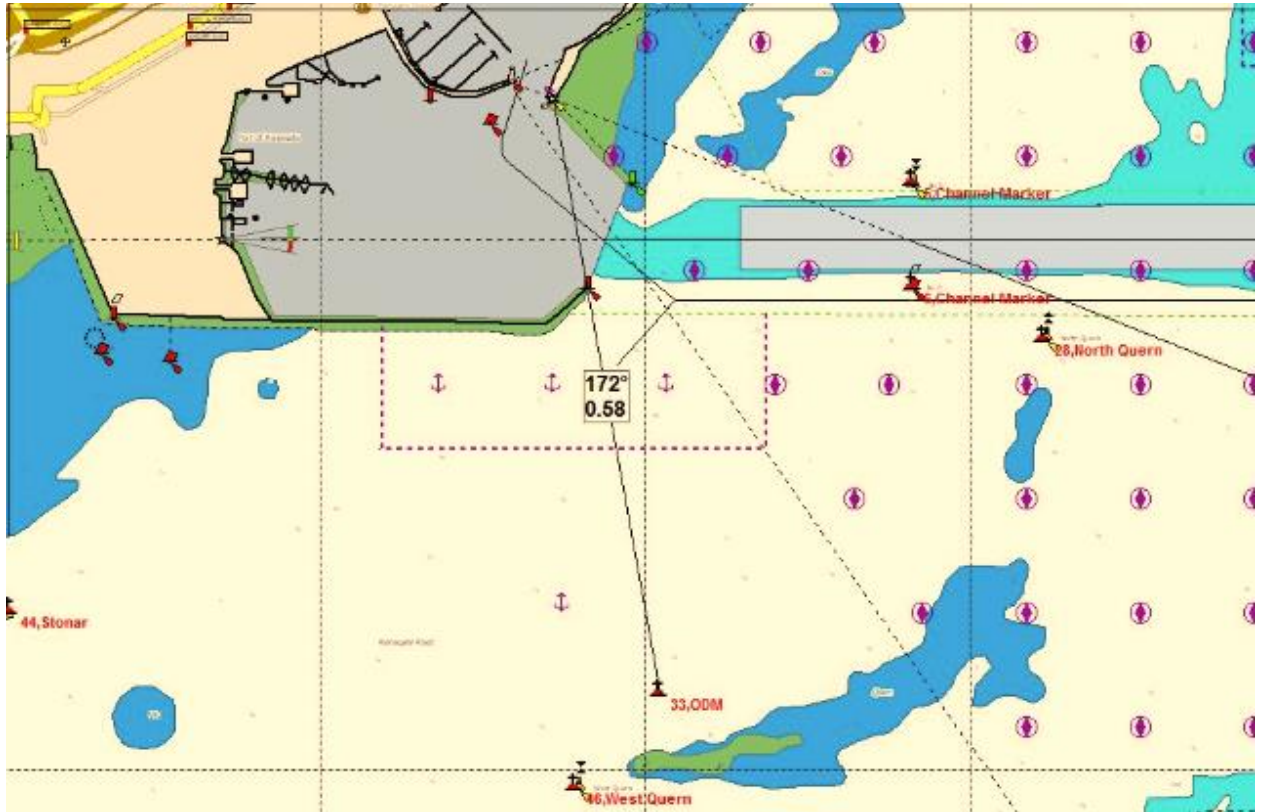
- 8.1 Marks are buoys in the RTYC list of marks the number and position of which will form as appendix to these Sailing Instructions.

9. THE START

- 9.1 Races will be started according to rule 26, with RTYC light system below:-

| <u>Signal</u> | <u>Flag and Sound</u> | <u>Minutes before starting signal</u> |
|---------------|---|---------------------------------------|
| Warning | Class Flag 1 light on | 5 |
| Preparatory | P,I,Z,Black flag, Z with I flag 2 lights on | 4 |
| One-minute | Announced on VHF 72 preparatory flag removed 1 light on | 1 |
| Start | light extinguished | 0 |

- 9.2 In order to assist competitors, the Race Officer may count down the start sequence on VHF Channel 72.
- 9.3 Individual recalls will be signalled by flag X and a light remaining on with **one** sound signal for **Individual recalls**. **General recalls will have Two** lights remaining on. Competitors may also be advised by radio on VHF Channel 72. This changes rules 29.1.
- 9.4 The start line is an extension to seaward of the forward mast of the RTYC Race Hut, on the Eastern Pierhead next to port control, marked by an orange triangle, and the red port entry mark at the end of the southern breakwater, bounded by the outer distance mark which will be an inflatable mark which may not be positioned on the start line. Boats must start between the red port entry mark and the outer distance mark.



- 9.5 Sail numbers of boats OCS or infringing other starting rules may be given on VHF Channel 72.
- 9.6 Classes whose warning signal has not been displayed must keep clear of the starting area and all boats whose warning signal has been made. Boats infringing this instruction may be protested by the race committee and the penalty may be DSQ.
- 9.7 A boat may use her engine or be towed in order to get to the starting area after her preparatory signal provided that, before she starts, she stops using her engine or drops her tow and then takes a penalty by promptly making one turn including one tack and one gybe.

10. CHANGE OF THE NEXT LEG OF THE COURSE

- 10.1 A change of course on Friday 31st May, after the start will be signalled before the leading boat has begun the first leg affected. The new course to be sailed will be given on VHF Channel 72. This changes Rule 33.

11. THE FINISH

The finish line is an extension to seaward of the forward mast of the RTYC Race Hut, on the Eastern Pierhead next to port control, marked by an orange triangle, and the red port entry mark at the end of the southern breakwater, bounded by the outer distance mark which will be an inflatable mark which may not be positioned on the start line. Boats must finish between the red port entry mark and the outer distance mark. **See start line image**

12. TIME LIMITS

- 12.1 There are **no** time limits and **the Race Committee may shorten the course at any time and for any reason**. Yachts must monitor VHF Channel 72 at all times. This changes Rule 32.

13. PROTESTS AND REQUESTS FOR REDRESS

- 13.1 Protests and requests for redress or re-opening shall be delivered to the Race Results Office within the appropriate time limit.
- 13.2 The protest time limit is 90 minutes after the last boat has finished the last race of the day.
- 13.3 Notices will be posted no later than 30 minutes after the protest time limit to inform competitors of hearings in which they are parties or named as witnesses. Hearings will be held in the protest room in the RTYC
- 13.4 Rule 61.1(b) is amended so that the listing of a boat on the Protest Schedule shall constitute informing the boat and the time limit is altered accordingly. It shall be the sole responsibility of the competitors to check the official notice board and to attend any protest hearing together with witnesses.
- 13.5 On the last scheduled day of racing a request for re-opening a hearing shall be delivered
- (a) within the protest time limit if the requesting party was informed of the decision on the previous day.
 - (b) no later than 30 minutes after the requesting party was informed of the decision on that day. This changes Rule 66.
- 13.6 Breaches of instructions 5.5 and 15 will not be grounds for a protest by a boat. This changes Rule 60.1(a). Penalties for these breaches may be less than disqualification if the protest committee so decides. The scoring abbreviation for a discretionary penalty imposed under this instruction will be DPI.
- 13.7 On the last scheduled day of racing a request for redress based on a protest committee decision shall be delivered no later than 30 minutes after the decision was posted. This changes Rule 62.2.

14. SCORING

- 14.1 The regatta will be scored using the Low Points system of RRS Appendix A.
- 14.2 All corrected times for handicap classes will be corrected to the nearest second to determine finishing place.

15. SAFETY

- 15.1 A boat that retires from a race shall notify the race committee on VHF Marine Channel 72 or by telephone RTYC +441843591766, as soon as possible after retirement.
- 15.2 Boats sailing in the Harbour Approach Channel must comply with Rules 9(b) and 9(d) of IRPCS. Boats impeding the progress of a large vessel in the Ramsgate Approach Channel will be disqualified without a hearing. This changes Rule 63.1.

16. MEASUREMENT CHECKS

A boat or equipment may be inspected at any time for compliance with the class rules and sailing instructions.

17. RADIO COMMUNICATION

- 17.1 Except in an emergency, a boat shall neither make radio transmissions while racing nor receive radio communications not available to all boats. This restriction also applies to mobile telephones.

17.2 The race committee will use VHF Marine Channel 72 to communicate with competitors. Such communications may include sail numbers of boats recalled OCS, course changes and safety matters. Boats called by the race committee by name or sail number may respond and under such circumstances will not be in breach of instruction 17. Failure to broadcast by the race committee or to time it accurately or failure to receive a broadcast by the race committee will not be grounds for redress. This changes Rule 62.1(a)

18. PRIZES

Prizes will be awarded as listed in the Notice of Race.

19 Risk and Responsibility Statement

The boat and crew accept the **Risk and Responsibility Statement** in paragraph 12 of the Notice of Race.

20. INSURANCE

Each participating boat shall be insured with valid third party liability insurance sufficient to meet all of any claims, for the total period of the regatta.